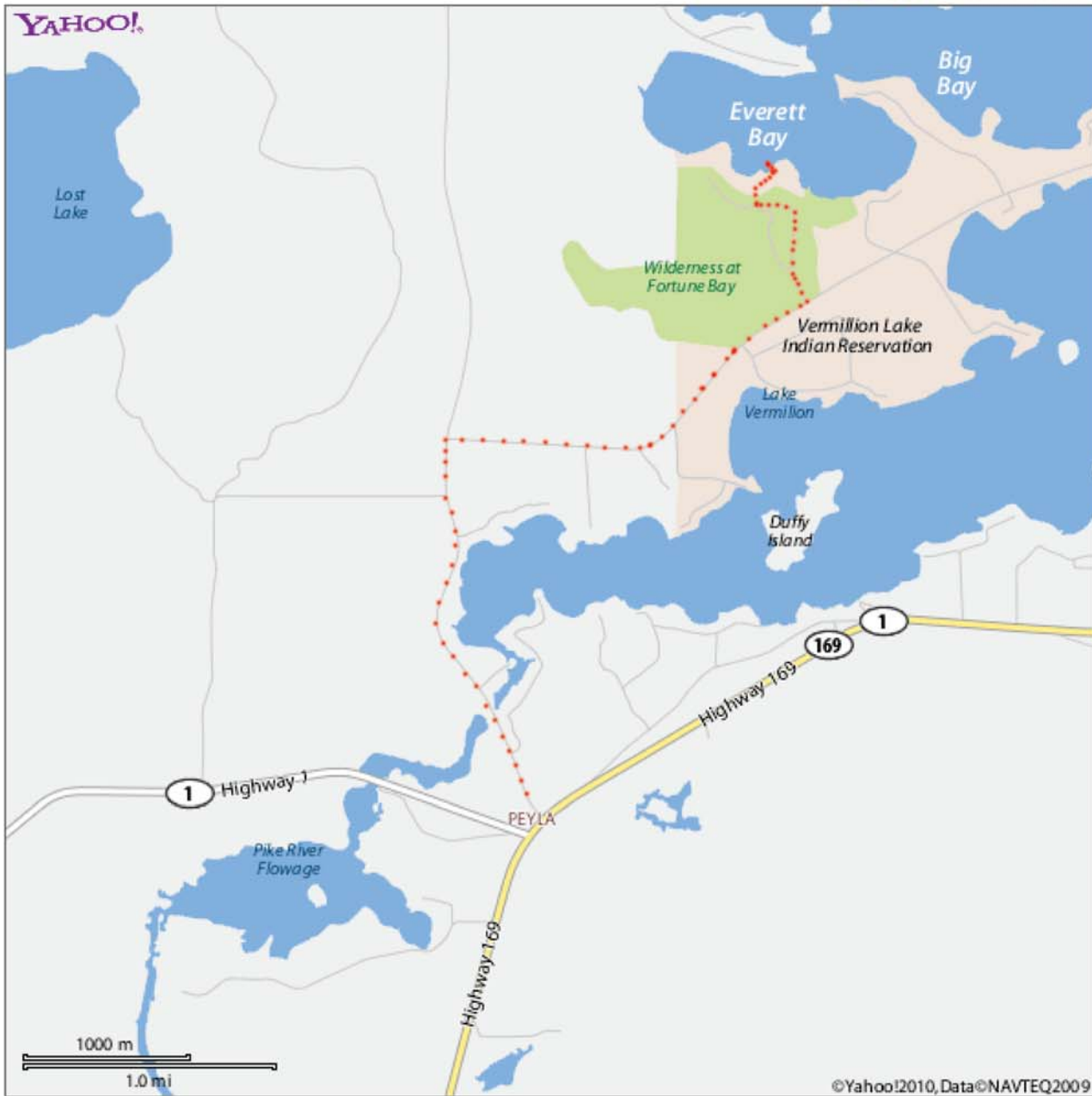


Fortune Bay Casino: (gps @ 47deg 49min 34.15sec N, 92deg 20min 34.07sec W)

About 3.5 miles north of Virginia along hwy 169/53, veer to the right to stay on Hwy 169. About 17 miles or so up the road, take a left on Hwy 77 (there is a large gas station on the right, 'The Ledge'). It's about 1.75 miles to where you turn right on Bois Forte Road (there is a large sign to direct you to Fortune Bay Casino.) Another 1.85 miles and you hang a left into the entrance to Fortune Bay. Follow the road, which will curve left around the back of the casino, then you will hang a right toward the marina and out onto the lake. (Follow the red dots on the map below, which start at the turn from 169 onto 77, and all the way to the lake.)

# Map of Tower, MN



When using any driving directions or map, it's a good idea to do a reality check and make sure the road still exists, watch out for construction, and follow all traffic safety precautions. This is only to be used as an aid in planning.